



THE

MEADOW VIEW GROWERS, INC.
NEW CARLISLE, OH · 937.845.0093
www.meadowview.com

WINTER 2008

GARDEN VIEW

The 'Fantasy' Poinsettia: Add Sparkle to the Holidays

If you're a nontraditionalist or just like to add a little extra flair to your holiday decorating, here's something unique for you at Meadow View: "fantasy" poinsettias.



We give these poinsettias a one-of-a-kind look by applying a special dye to the bracts and finishing

them with a dusting of shimmer, glitter, or translucent snowflakes. The colors of the plants range from sparkling blue to iridescent yellow to a soft, dusty rose.

You have to see them to believe them!

A Myth Busted

Despite a common misconception, poinsettias are not poisonous. In fact, a study at The Ohio State University has proven they aren't.

Ohio State's findings were confirmed by the Children's Hospital of Pittsburgh and Carnegie Mellon University in a study of almost 23,000 poinsettia exposures reported to poison control centers across the country. None of the cases presented evidence of toxicity.

We Make Fund-raising Easy

Give Diane a call about poinsettias for your group's fund-raiser this Christmas season. We make it easy to add to your treasury. Many sizes are being grown for early December delivery.

Meadow View Poinsettias: *Breath-taking and Breath-giving*

Poinsettias, with their colorful bracts, add cheer to the Christmas season—and so much more.

Like other houseplants, poinsettias purify air, promoting more healthful indoor living. They give off oxygen, absorb carbon dioxide, remove airborne toxins and raise the humidity level, which helps hold down dust particles.

- A NASA study found that common houseplants can remove up to 87 percent of airborne toxins in 24 hours.
- An Agricultural University of Norway study reported that indoor plants can reduce fatigue, coughs, sore throats and other cold-related illnesses by more than 30 percent.
- Bruno Cortis, M.D., a Chicago cardiologist, says houseplants have yet another positive effect on health: They make people feel calmer and more optimistic. In other words, plants make you happy!



For Best Results

To improve indoor air quality in an average 1,800-square-foot house, the NASA study recommends using 15 to 18 "good-sized" houseplants in 6- to 8-inch diameter containers. So, as you decorate your home and office with poinsettias, you'll be helping your health this winter, too.

Poinsettias at Meadow View

Poinsettias are the plant of choice for the winter months, and Meadow View grows only the improved varieties that will perform the best for your enjoyment.

Many of the newer cultivars are bred for superior performance in today's homes and offices. They last many weeks, have brighter colors and are less sensitive to temperature fluctuations.

**Buy 2 Beautiful
POINSETTIAS**
at *Meadow View*
And get 1 free

*(Equal or lesser value. No limit.
Coupon expires 12/20/08.
No other discounts apply.
Sorry, cat not included.)*



WE'RE LOOKING FORWARD TO 2009

— Our 25th Anniversary Year! —

While you were tending this past summer's flower beds, we at Meadow View were looking ahead to the gardens you'll be taking care of in 2009.



In early 2009, we'll begin using our new, high-efficiency greenhouse. And next spring—thanks to our loyal customers—Meadow View will be celebrating 25 years in business.

Yes, we're always a year ahead of you. That's what it takes to select and grow the best, healthiest plant varieties for you to buy, year after year.

Late spring and early summer we choose the new varieties we will grow for the next year. We visit trial gardens, such as those at The Ohio State University, where we compare qualities of many varieties, side by side.

Then, beginning in June, we start our perennials from seed and cuttings in our greenhouses. And for the rest of the year, we give them a lot of TLC so they'll be ready to perform well for you in the spring.

Good varieties grown with care provide the quality and selection our customers have come to expect of us.

We wish you a happy, blooming 2009!



At The Ohio State University trial gardens Anne compares petunia varieties.

25TH ANNIVERSARY CALENDAR

Stop by Meadow View in December and pick up a copy of our special edition 25th anniversary calendar. It's something you'll want to hold onto, with beautiful photos, gardening tips, special coupons and dates for our seminars and workshops. Supplies are limited. Cost is \$3 with proceeds benefiting Children's Miracle Network.

Evergreens and Christmas

Using evergreens for decoration goes way back—to thousands of years ago when ancient Egyptians and Romans used them to celebrate the winter solstice.

They thought evergreens held magical powers. After all, they stayed alive when everything else died. Plus, evergreens reminded them of the coming spring.

Mistletoe, holly and ivy have been considered extra special. They're green—and bear fruit—in the winter.

Some European tribes believed that mistletoe represented peace. They negotiated with enemies under it. (They "kissed and made up.")

Wreaths have held special holiday significance. Having neither a beginning nor end, they symbolize eternity. In early times holly was added to wreaths to attract elves and fairies that would bring good luck to a household.

To keep the tradition alive in your house, soak your Meadow View evergreens in water for a few minutes before decorating. This rehydrates them, helping them stay fresh longer.

Our Garden Barn Helps You Deck the Halls

Beginning with our Holiday Open House on November 15, savings in the Meadow View Garden Barn will increase as the holiday season progresses.

In our Garden Barn you will find countless ways to decorate your home and wish your friends and family well this holiday season and coming new year.



Welcome guests to your door with fresh, fragrant pine roping and cheerful wreaths. String new, energy efficient LED lights in your windows to create a sparkling invitation.

Also to help you deck your halls, the Garden Barn offers Christmas gnomes, nativities and fabulous pre-lit Christmas trees in an amazing array of styles and sizes to fit in the perfect spot.

Adorn the boughs of your gorgeous tree with glistening and gleaming ornaments from our various themed trees.

Warm your hearth and stir your senses with the new elegant designs and holiday scents of Bridgewater candles.

Happy Holidays!

Kecia Carney

Schedule a Tour

We enjoy providing "behind the scenes" tours so you can see first-hand what goes into producing the plants you purchase. Contact Brenda to schedule a tour for your group.

Going Green at Christmas!



Christmas trees help celebrate the season. After the holidays, you can put your tree to a second use. Place it in your backyard as a sanctuary for our feathered friends. Make it the Ritz Carlton by adorning it with suet or peanut butter-smear pine cones.

Another green, post-holiday option is composting your tree.

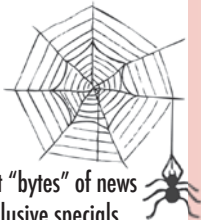
What to do with packing peanuts? Add them to the bottom of a container garden to help with drainage and keep the pot from getting too heavy.

Our favorite "going green" tip is to give plants or gift cards. Plants don't get gift wrapped, and they can be composted. Gift cards allow recipients to pick out something they can use. And the gift cards can be recycled.

Bloomin' Rewards!

Shopping at Meadow View is a rewarding experience. In fact, for every \$1 you spend here, you earn 1 point in our Bloomin' Rewards program. When you reach 250 points, we'll mail you a \$25 Meadow View gift card. The program is free, so be sure to sign up today! This offer is subject to change without notice.

Welcome to Our Web...



Join our Web Club to catch the best "bytes" of news on Meadow View happenings, exclusive specials, growing tips and other tidbits. To become a member—or Web Club "Spyder"—visit www.meadowview.com, click on the "Info" button toward the bottom right of the home page, select "SpyderBytes Web Club" on the drop down list and enter your e-mail address. Regular e-mailed updates will soon fly your way. Invite your friends to join, too.

(Your e-mail address is for the exclusive use of Meadow View Growers, Inc. We will never offer your e-mail address to any other entity or company. You may opt out of our e-mail list at any time by replying to any of our messages. Use the word "CANCEL" in the subject line of your reply.)

November, December

CALENDAR OF EVENTS

Business Hours: Mon.-Fri. 9-6, Sat. 9-5, Sun. Closed

Saturday, Nov. 8
10-11 A.M.

Preparing Perennials for Winter

Carol, our Perennials Manager, will offer you important tips and techniques for preparing your garden for its winter rest.

Saturday, Nov. 15

Open House

The holidays arrive at Meadow View! Enjoy a unique selection of gifts, special pricing, refreshments and an early start on holiday shopping away from the crowds at the mall.

Saturday, Nov. 22
10-11:30 A.M.

Stamping Workshop

Learn how to make three beautiful cards and gift tags with rubber stamps. Stampin' Up! demonstrators Amy Miller and Ellen Finke-McCarthy will be on hand to show you how. Cost is \$10. Pre-register by Nov. 15

Saturday, Nov. 22
1:30 P.M.

Gingerbread House Contest

Bring in your gingerbread house and see how your creation stacks up against the competition. Prizes will be awarded.

Nov. 24-28
(Closed Nov. 27 for Thanksgiving)

Fresh live greens, wreaths and roping arrive this week. Take in the smell of fresh evergreens with balsam, pine and cedar

Wednesday, Dec. 3
6:30-8:30 P.M.

Ladies' Night Out: An Evening of Elegance

Bring your friends for a shopping experience you will never forget at our third annual "Ladies Night Out." Enjoy delightful treats and get inspired by our one-of-a-kind selection of giftware and homegrown poinsettias

Saturday, Dec. 6
10-11 A.M.

Christmas Centerpiece Workshop

Need help with your holiday decorating? Join us as we lead you in creating a beautifully decorated fresh wreath. Pre-register by Nov. 29. Cost is \$25.

Garden Makeover Winners

Gene and Jane Cross and their son, Cameron, stand on their porch in Enon, proud winners of Meadow View's Garden Makeover—a prize valued at \$2,000. A before picture of their garden is below right.

Many thanks to our Garden Makeover partners:

- **Lavy Landscape Supplies**, 1-800-554-4240, www.lavylandscape.com
- **The Site Group**, 845-7305, www.sitegroupinc.com
- **Scarff's Nursery**, 845-3130, www.scarffs.com





MeadowView

GROWERS, INC.

755 N. Dayton-Lakeview Rd.
New Carlisle, OH 45344

937.845.0093

www.meadowview.com

Business Hours

Monday-Friday, 9-6

Saturday, 9-5

Sunday, Closed

PRSR STD
U.S. Postage

PAID

Springfield, OH
Permit No. 151

OUR MISSION STATEMENT

Meadow View Growers, Inc. will exceed the expectations of our customers and employees by enhancing the environment, where we live and work, with products and services of the highest quality.

Need a:

- Patio
- Outdoor Kitchen
- Fireplace
- Walkway
- Water Feature

We can help!

Visit us at:
www.lavylandscape.com
12386 W. National Rd.
New Carlisle, Ohio
45344
800.554.4240

LAVY ENTERPRISES
Landscaping Supplies

